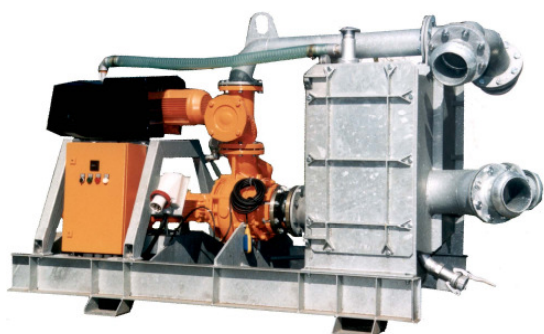


## HÜDIG Waste Water Vacuum Aggregate

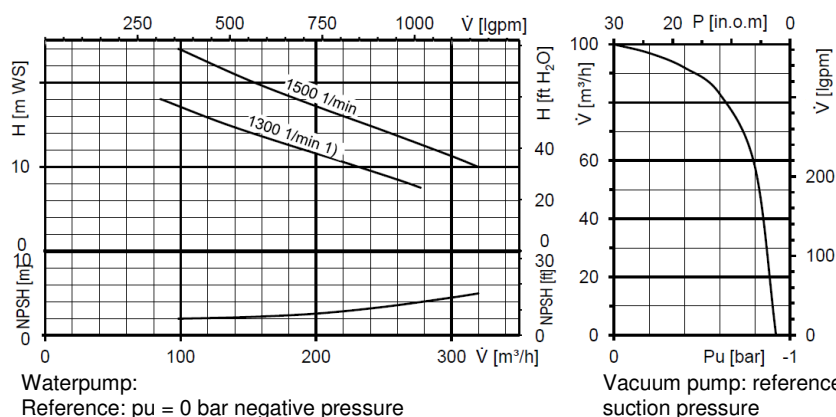
HÜDIG®

EVA 180

www.huedig.de



EVA 180

**Application:**

Building industry – Industry – Communities

- Average
- Domestic sewage
- Canal sanitation
- Sewage pumping
- Pit pumping
- Thick slurry pumping
- Slime pumping
- Transfer pumping

**Function principle:**

The sewage water pump together with the vacuum generator both powered by electric motors ensure a continuous flow of the medium. The separator-chamber, installed at the inlet of the sewage pump allows the air of the suction-line to be separated from the water and consequently the water pump conveys only the liquid medium. This combined system ensures a safe and fast suction process.

**Features:**

- Self priming sewage pump aggregate with switch board
- Main plug 63 A
- Assembled on galvanized base frame
- horizontal sewage-pump with screw type centrifugal impeller
- dry running, almost service free vacuum pump
- separation of air/water mixture through galvanized air separation system
- switch board protection IP 54, with thermal motor protection for electric motor. The start of the sewage pump is being effected by an electronic starting current limiter. Dry running and overpressure protection are integrated
- sound power level: LWA = 94dB
- calculated sound pressure level: LPA<sub>7m</sub>=68dB(A), LPA<sub>10m</sub>=65dB(A)

**Options:**

Type	Water Pump				Vacuum Pump			Motors					Shipping dimensions appr.			
	Capa-city	Head	Connec-tion	Max. solid size	Capa-city	Vac-uum	RPM <sup>1)</sup>	Protection class	Vol-tage	power			Rated current		Length x width x Height	Weight
										WP <sup>2)</sup>	VP <sup>3)</sup>	WP <sup>2)</sup>	VP <sup>3)</sup>			
														U		
m³/h	m H <sub>2</sub> O	DN <sub>s</sub> DN <sub>D</sub>	∅	m³/h	bar	1/min	Type of construction	V	kW	kW	A	A	l x w x h mm	m kg		
EVA180	320	24	159 V	100	100	-0,92	1500	IP 54 B 3	400	15	3	29,1	6,8	2725 x 1170 x 1630	1030	

<sup>1)</sup> Additional RPM only with Option: Frequency converter

<sup>2)</sup> WP = Water pump

<sup>3)</sup> VP = Vakuumpump

Subject to change without prior notice!

# HÜDIG - your partner to solve water problems.

## HÜDIG®

GmbH &amp; Co. KG

Absenk- und Berechnungsanlagen

Heinrich-Hüdig-Straße 2 · 29227 Celle

Telefon (0 51 41) 88 45-0 · Fax (0 51 41) 8 69 18

e-mail: Info@huedig.de